



Alpesh Thakkar  
+91 92278 88813



Deep Thakkar  
+91 99790 05996



**NILKANTH EQUIPMENTS**

# NILKANTH EQUIPMENTS



*One-Stop Destination For All Your  
Hotel And Restaurant Needs...*

**KITCHEN EQUIPMENTS**



Basement, Balshiv Apartment, Oxford Tower, Behind  
Shreeji Complex, Gurukul, Memnagar, Ahmedabad - 380052



Basement, Nilkanth Apartments, Besides Akaar Khaadi  
Bhandar, Gurukul, Ahmedabad - 380052

follow us





# About Us

Nilkanth Equipments is a 'one-stop-shop' providing a wide range of first class equipment, cutlery, and crockery for the HoReCa industry. Throughout the years, we have developed ourselves as a leading company in the hotel supply industry. Having started with nothing in hand, with the success of our business over the years we kept extending our product range.

The founders of Nilkanth Equipments developed this company with the best quality of work and expertise of several years in this industry. Our product line is very extensive. We expertise in a wide range of products such as equipments, crockery, glassware, cutlery & accessories. We owe the attractive features like corrosion free resistant finish products, durable finish products, optimum performance products; Nilkanth Equipments' products are widely used in many application areas, such as Hotel Industries, Restaurants Industries, Industrial & Institutional Kitchens Areas, Base Kitchens Industries and Fast Food Joints.

We at Nilkanth Equipments specialize in offering an extensive range of both new and pre-owned kitchen equipments, cutlery, and crockery. As passionate enthusiasts of culinary excellence, we understand the importance of having reliable, high-quality tools in your kitchen. Our rising range of products possesses style and superior quality for those who demand the best. Today, we have achieved significant position in the industry by fair business ethics and transparent dealings. Our service, knowledge and in-depth understanding reflects in the products that radiate an impression of brilliance and exhibit hereditary skills.

The 'Quality Assurance' procedures framed and executed for our entire operations facilitate in meeting the set industry norms of the products. We offer durable range products, which are highly appreciated for their design, accuracy, and material strength. Having established ourselves in the local market, our company capitalizes on healthy relations with an extensive list of worldwide buyers. We highly believe in serving the best quality products to our clients which makes us stand out in Hotel Supplies Industry.

It's not who we are, but what we do that defines us. With that belief in mind, we at Nilkanth Equipments believe that - Quality and Service are at the core of everything that we do at Nilkanth Equipments. Skilled workforce and friendly working environment are ingredients which have been fuelling the growth of this company. Team of Nilkanth Equipments is always ready to accept challenges and creating new opportunities with full responsibility & accountability of their work with dedication & consistent results, We are motivated and committed to continue this trend during our future endeavours too.



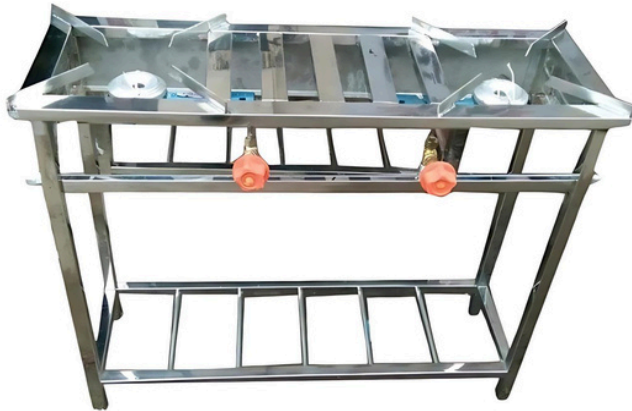
# KITCHEN EQUIPMENTS AND MACHINERIES



**Single Burner With Table**  
(Dimensions: 45" x 24" x 32")



**Catering Double Burner Table Top**  
(Dimensions: 30" x 12" x 9")



**Catering Two Burner With Stand**  
(Dimensions: 30" x 12" x 30")



**SS Catering Burner**  
(Dimensions: 10x10x8" | 12x12x8" | 15x15x9")



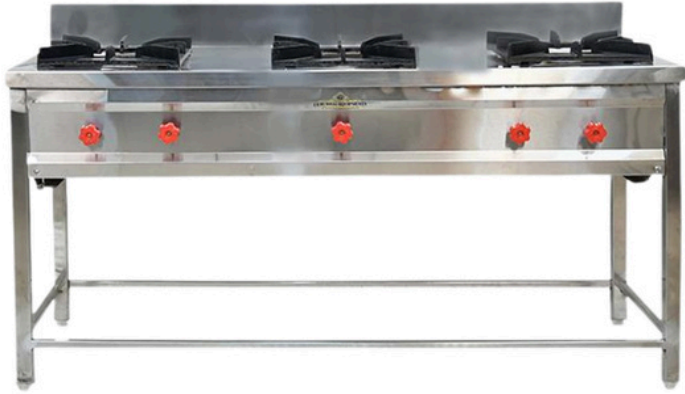
**Single Burner**  
(Dimensions: 24" x 24" x 32")



**Double Burner**  
(Dimensions: 45" x 24" x 32")



# KITCHEN EQUIPMENTS AND MACHINERIES



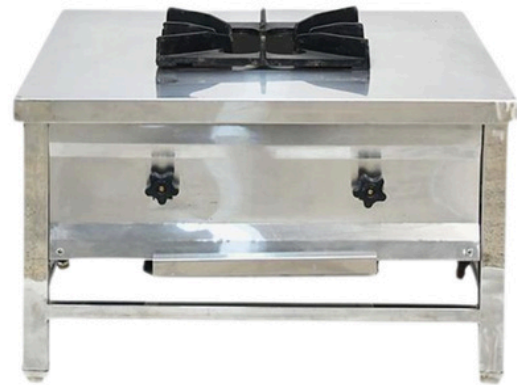
**Three Burner**  
(Dimensions: 66x24x32" | 72x24x32")



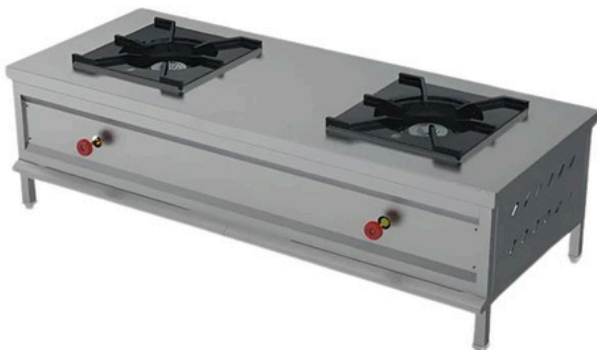
**Four Burner**  
(Dimensions: 45" x 24" x 32")



**MS Chinese Burner**  
(Dimensions: 12" x 12" x 30")



**Pot Burner**  
(Dimensions: 30" x 30")



**Two Burner Low Height**  
(Dimensions: 36" x 18")



**Service Table With 1 Undershelf**  
(Dimensions: 24x24" | 36x24" | 45x24" | 60x24")



# KITCHEN EQUIPMENTS AND MACHINERIES



**Service Table With 2 U/S & Backsplash**  
(Dimensions: 45x24" | 60x24")



**Service Table**  
(Dimensions: 45x24" | 60x30")



**Granite Top Service Table**  
(Dimensions: 45" x 24")



**Pickup Table With 1 OHS & 2 U/S**  
(Dimensions: 24x24" | 36x24" | 45x24" | 60x24")



**Pickup Table With 2 OHS & 1 U/S**  
(Dimensions: 24x24" | 36x24" | 45x24" | 60x24")



**Pickup Table With 2 OHS & 2 U/S**  
(Dimensions: 24x24" | 36x24" | 45x24" | 60x24")



# KITCHEN EQUIPMENTS AND MACHINERIES



**Dish Landing**  
(Dimensions: 45" x 24" x 32")



**Dish Landing With Table**  
(Dimensions: 45" x 24" + 18")



**Double Sink**  
(Dimensions: 45" x 24" x 32")



**Pot Sink**  
(Dimensions: 24" x 24" x 24")

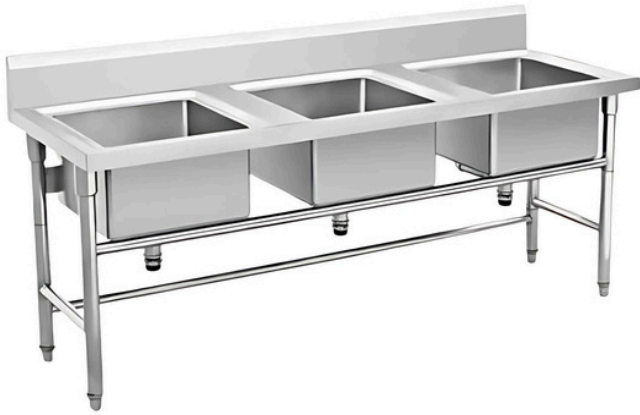


**Single Sink**  
(Dimensions: 24" x 24" x 32")



**Single Sink With Table**  
(Dimensions: 45x24x32" | 60x24x32")

# KITCHEN EQUIPMENTS AND MACHINERIES



**Three Sink**  
(Dimensions: 66" x 24" x 32")



**Dosa Bhatti**  
(Dimensions: 30x15" | 36x24" | 48x24")



**Dosa Bhatti Table Top**  
(Dimensions: 30" x 15" x 12")



**Roti Bhatti With Bullet**  
(Dimensions: 30x15" | 36x24" | 48x24")



**Table Top Roti Bhatti With Bullet**  
(Dimensions: 30x15" | 36x24" | 48x24")



**Roti Bhatti**  
(Dimensions: 30x15" | 36x24" | 48x24")



# KITCHEN EQUIPMENTS AND MACHINERIES



**Table Top Roti Bhatti**  
(Dimensions: 30" x 15" x 12")



**2 Pot Bain Marie**  
(Available In Electric & Gas)



**4 Pot Bain Marie**  
(Available in Electric & Gas)



**6 Pot Bain Marie**  
(Available in Electric & Gas)



**8 Pot Bain Marie**  
(Available in Electric & Gas)



**Bain Marie 1/1 Without Glass**  
(1/1x150MM)

# KITCHEN EQUIPMENTS AND MACHINERIES



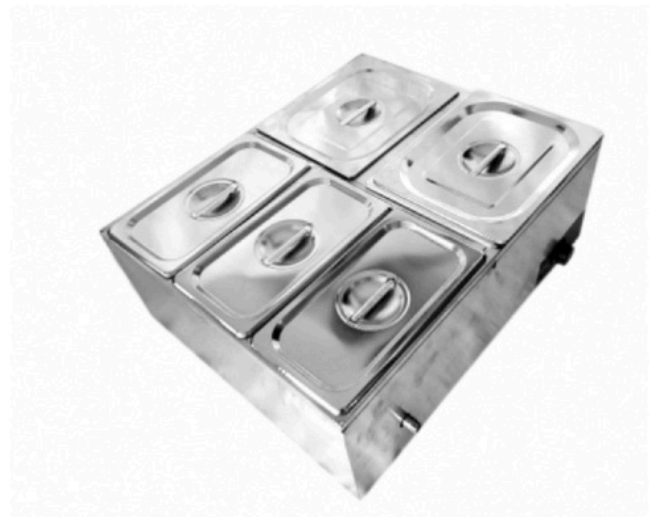
**Bain Marie 1/2 Without Glass**  
(1/2x150MM - 2 PCS)



**Bain Marie 1/3 Without Glass**  
(1/3x150MM - 3 PCS)



**Bain Marie 1/4 Without Glass**  
(1/2x150MM - 4 PCS)



**Bain Marie 1/5 Without Glass**  
(1/3x150MM - 3 PCS | 1/2x150MM - 2 PCS)



**Bain Marie 1/6 Without Glass**  
(1/3x150MM - 6 PCS)



**Bain Marie With Glass 2H**  
(1/2x100MM - 2 PCS)



# KITCHEN EQUIPMENTS AND MACHINERIES



**Bain Marie With Glass 3H**  
(1/3x100MM - 3 PCS)



**Bain Marie With Glass 4H**  
(1/2x100MM - 4PCS)



**Bain Marie 1/4 Without Glass**  
(1/2x150MM - 4 PCS)



**Masala Trolley**  
(Dimesions: 30" x 18" x 32")



**Three Tier Trolley**  
(Dimensions: 24"x21" | 19"x26")



**MS Rack**  
(Dimensions: 36" x 15" x 72")

# KITCHEN EQUIPMENTS AND MACHINERIES



**SS Pot Rack**  
(Dimensions: 40x18x72" | 45x18x72")



**SS Rack**  
(Dimensions: 40x18x72" | 45x18x72" | 24x36x72")



**Single Door Deep Fridge**  
(Capacity: 250L)



**Two Door Deep Fridge**  
(Capacity: 500L)



**SS 2 Door Vertical Chiller**  
(Capacity: 450L)



**SS 4 Door Vertical Chiller**  
(Capacity: 650L)



# KITCHEN EQUIPMENTS AND MACHINERIES



**SS 6 Door Vertical Chiller**  
(Capacity: 700L)



**Undercounter Fridge**  
(Capacity: Single Door (300L) | Double Door (450L))



**Undercounter Fridge Makeline  
With Pickup (Dimensions: 45x24" | 60x24")**



**Undercounter Fridge With Makeline**  
(Dimensions: 45x24" | 60x24")



**Undercounter Fridge With Pickup**  
(Dimensions: 45x24" | 60x24")



**Water Cooler One Tap**  
(Capacity: 20L To 40L)

# KITCHEN EQUIPMENTS AND MACHINERIES



**Water Cooler Two Tap**  
(Capacity: 60L To 80L)



**Water Cooler Three Tap**  
(Capacity: 100L to 200L)



**Single Door Visi Cooler**  
(Capacity: 380L)



**Double Door Visi Cooler**  
(Dimensions: 950L)



**MS Drum Tandoor**  
(Dimensions: 24" x 24" x 36")



**SS Drum Tandoor**  
(Dimension: 24" x 24" x 36")



# KITCHEN EQUIPMENTS AND MACHINERIES



**SS Square Tandoor**  
(Dimensions: 24x24x36" | 30x30x36")



**Stand Mixer**  
(Capacity: 3.5 Litres)



**Stand Mixer**  
(Capacity: 5 Litres)



**Planetary Mixer**  
(Capacity: 7 Litres)



**Planetary Mixer With Guard**  
(Capacity: 10 Litres | 20 Litres | 30 Litres)



**Planetary Mixer With Guard (Belt)**  
(Capacity: 40 Litres | 50 Litres)

# KITCHEN EQUIPMENTS AND MACHINERIES



**MS Spiral Mixer**  
(Capacity: 10 Litres)



**Fiber Body Spiral Mixer**  
(Capacity: 20 Litres | 30 Litres | 40 Litres)



**Idli/Dhokla Cooker**  
(Size: 4 Trays To 8 Trays)



**Dhokla Steamer**  
(Size: 6 Trays)



**Dhokla Steamer**  
(Size: 8 Trays)



**Khaman Steamer**  
(Size: 6 Tray)



# KITCHEN EQUIPMENTS AND MACHINERIES



**Khaman Steamer**  
(Size: 8 Tray)



**Momo Steamer**  
(Size: 10" | 11" | 12" | 13" | 14")



**Idli Steamer**  
(Size: 6 Tray)



**Idli Steamer**  
(Size: 8 Trays)



**Shawarma Machine**  
(Dimensions: 19" x 26" x 32")



**Shawarma Machine With Counter**  
(Dimensions: 34" x 26" x 30")

# KITCHEN EQUIPMENTS AND MACHINERIES



**Mini Shawarma Machine**  
(Available In Electric & Gas)



**Gas Shawarma**  
(Available In 3 Burner & 4 Burner)



**Electric Shawarma**  
(Available In 3 Controls & 4 Controls)



**Electric Griddle**  
(Dimensions: 22")



**Electric Griddle**  
(Dimensions: 29")



**Electric Griddle Plain & Groove**  
(Dimensions: 29")



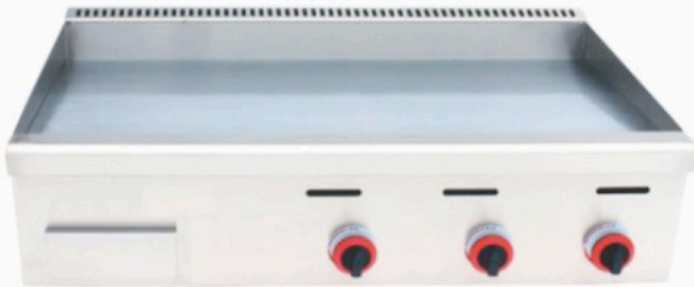
# KITCHEN EQUIPMENTS AND MACHINERIES



**Gas Griddle**  
(Dimensions: 13.5")



**Gas Griddle**  
(Dimensions: 22")



**Gas Griddle**  
(Dimensions: 29")



**Microwave Oven**  
(Capacity: 25 Litres)



**Salamander**  
(Dimensions: 8x16" | 10x16" | 16\*24")



**Single Electric Pizza Oven**  
(Dimensions: 16x16" | 20x20")

# KITCHEN EQUIPMENTS AND MACHINERIES



**Baking Oven 1D1T**  
(Available in Electric & Gas)



**Baking Oven 1D2T**  
(Available in Electric & Gas)



**Baking Oven 1D3T**  
(Available in Electric & Gas)



**Baking Oven 2D2T**  
(Available in Electric & Gas)



**Baking Oven 2D4T**  
(Available in Electric & Gas)



**Baking Oven 3D6T**  
(Available in Electric & Gas)



# KITCHEN EQUIPMENTS AND MACHINERIES



**Baking Oven 3D9T**  
(Available in Electric & Gas)



**Baking Oven 1D2T**  
(With 10 Trays Proofer)



**Baking Oven 2D4T**  
(With 10 Trays Proofer)



**Single Sandwich Griller**  
(Size: 10'')



**Single Sandwich Griller**  
(Size: 14'')



**Double Sandwich Griller**  
(Size: 10'')

# KITCHEN EQUIPMENTS AND MACHINERIES



**Double Sandwich Griller**  
(Size: 14")



**Single Sandwich Griller**  
(Dimensions: 12x12" | 13x13" | 16x16")



**Grill Pan**  
(Dimensions: 40 x 23 cm)



**Sugarcane Machine**  
(Adjustable)



**Sugarcane Machine**  
(Non-Adjustable)



**Single Electric Deep Fryer**  
(Capacity: 8 Litres)



# KITCHEN EQUIPMENTS AND MACHINERIES



**Double Electric Deep Fryer**  
(Capacity: 8 Litres)



**Heavy Duty Single Electric Deep Fryer**  
(Capacity: 8 Litres)



**Double Electric Deep Fryer**  
(Capacity: 16 Litres)



**Double Basket Electric Deep Fryer**  
(Capacity: 16 Litres)



**Induction**  
(Power: 2000W)



**Single Electric Deep Fryer**  
(Power: 3500W)

# KITCHEN EQUIPMENTS AND MACHINERIES



**Commercial Induction**  
(Power: 3500W)



**Round Waffle Maker Single**



**Round Waffle Maker Double**



**Bubble Waffle Maker**



**Heart Waffle Maker**



**Round Rotating Waffle Maker**

# KITCHEN EQUIPMENTS AND MACHINERIES



**Gas Bubble Waffle Maker**



**Pancake Maker**



**Gas Quail Egg Maker 35 In 1**



**Donut Waffle Maker 6 In 1**



**Lolly Stick Waffle Maker**



**Cone Waffle Maker**



# KITCHEN EQUIPMENTS AND MACHINERIES



**Biscuit Waffle Maker**



**Crepe Maker Single**



**Crepe Maker Double**



**Heavy Duty Mixer Grinder**



**JTC Omni Blend**



**Lords Mixer Grinder**

# KITCHEN EQUIPMENTS AND MACHINERIES



**Priya Gold Mixer**



**Silver Crest Imported Blender**



**Sujata Dynamix Mixer**



**Sujata Mixer With Juicer**



**Wistec 5-Speed Hand Mixer**



**Hand Blender**

# KITCHEN EQUIPMENTS AND MACHINERIES



**Electric Minimax Hand Mixer**



**Cooling Juice Dispenser Single**



**Cooling Juice Dispenser Double**



**Cooling Juice Dispenser Triple**



**Slush Machine Single**



**Slush Machine Double**



# KITCHEN EQUIPMENTS AND MACHINERIES



**Milk Shaker**  
(Single | Double)



**Black Blender With Cover**  
(Capacity: 1.5 Litres)



**Flash Blender With Timer (Keypad)**  
(Capacity: 2 Litres)



**Flash Blender (Analog)**  
(Capacity: 1.5 Litres)



**Cup Cutlery Warmer**



**SS Plate Warmer (Round)**

# KITCHEN EQUIPMENTS AND MACHINERIES



**SS Square Plate Warmer (Single)**



**SS Square Plate Warmer (Double)**



**Electric Popcorn Machine (Red)**



**Electric Popcorn Machine (Black)**



**Electric Popcorn Machine (Yellow)**



**Electric Popcorn Machine  
(Yellow With Aluminium Column)**

# KITCHEN EQUIPMENTS AND MACHINERIES



**Electric Popcorn Machine With Aluminium Column**



**Electric SS Popcorn Machine**



**Electric Popcorn Machine With Toughend Glass**



**Electric Popcorn Machine With Gold Column**



**Electric Popcorn Machine With Cart (Red)**



**Electric Popcorn Machine With Cart (Black)**



# KITCHEN EQUIPMENTS AND MACHINERIES



**Electric Popcorn Machine Double**



**Gas Popcorn Machine (Automatic)**



**Gas Popcorn Machine (Stove Type)**



**Gas Popcorn Machine (With Motor)**



**Food Warmer  
(66CM-Black)**



**Food Warmer  
(38CM - Red)**

# KITCHEN EQUIPMENTS AND MACHINERIES



**Food Warmer (66CM - Red)**



**Food Warmer (95CM - Red)**



**Food Warmer (66CM - Green)**



**SS Food Warmer (66 CM)**



**Food Warmer (66CM - Black)**



**Food Warmer With Lamp  
(Single - Silver)**

# KITCHEN EQUIPMENTS AND MACHINERIES



**Food Warmer With Lamp  
(Double - Silver)**



**Food Warmer With Lamp  
(Triple - Silver)**



**Food Warmer With Lamp  
(Single - Rose Gold)**



**Food Warmer With Lamp  
(Double - Rose Gold)**



**Food Warmer With Lamp  
(Triple - Rose Gold)**



**Hanging Warmer Lamp  
(Rose Gold)**



# KITCHEN EQUIPMENTS AND MACHINERIES



**Warmer Lamp  
(U-Shaped)**



**Chilli Cutting Machine  
(Capacity: 40Kgs/Per Hour)**



**Dough Kneader  
(Capacity: 3 Kgs | 5 Kgs | 10 Kgs)**



**Gravy Machine  
(Capacity: 40 Kgs | 100 To 120 Kgs)**



**Meat Mincer  
(Capacity: 150 Kgs/Per Hour)**



**Potato Peeler  
(Capacity: 150 Kgs/Per Hour)**

# KITCHEN EQUIPMENTS AND MACHINERIES



**Tilting Wet Grinder**  
(Capacity: 10 Litres | 20 Litres)



**Vegetable Cutting Machine**  
(Capacity: 150Kgs/Per Hour)



**Wet Grinder**  
(Capacity: 3 Litres | 5 Litres | 10 Litres)



**Pop-Up Toaster**  
(4 Slice)



**Pop-Up Toaster**  
(6 Slice)



**Electric Conveyor Toaster**

# KITCHEN EQUIPMENTS AND MACHINERIES



**Manual Ice Crusher**



**Ice Crusher - Orange Body  
(Single Blade)**



**Ice Crusher - Grey Body  
(Single Blade | Double Blade)**



**Ice Crusher - Yellow Body**



**Ice Crusher Aluminium Body  
(Single Blade | Double Blade)**



**Snow Flake Machine**



# KITCHEN EQUIPMENTS AND MACHINERIES



**Table Top Ice Cube Machine**  
(Capacity: 15 Kgs)



**Ice Cube Machine**



**Soup Pot - Black**  
(Capacity: 10 Litres)



**Soup Pot - Brown**  
(Capacity: 10 Litres)



**Soup Pot - Green**  
(Capacity: 10 Litres)



**Soup Pot - Red**  
(Capacity: 10 Litres)

# KITCHEN EQUIPMENTS AND MACHINERIES



**Soup Pot - Rose Gold**  
(Capacity: 10 Litres)



**Soup Pot - SS**  
(Capacity - 10 Litres)



**Soup Pot - Gold**  
(Capacity: 10 Litres)



**Soup Pot - Rose Gold**  
(Capacity: 10 Litres)



**Soup Pot - White, Black, Red & Yellow**  
(Capacity: 10 Litres)



**Insulation Barrel**  
(Capacity - 16L | 20L | 30L | 40L | 50L)

# KITCHEN EQUIPMENTS AND MACHINERIES



**Insulation Box - Red**  
(1/1 Pan | 1/2 Pan | 1/3 Pan)



**Chocolate Melter**  
(1/1 Pan | 1/2 Pan | 1/3 Pan)



**Chocolate Fountain**  
(Size: 3 Layer Mini)



**Chocolate Fountain**  
(Size: 4 Layer Mini)



**Chocolate Fountain**  
(Size: 3 Layer - 56 CM)



**Chocolate Fountain**  
(Size: 4 Layer - 60 CM)



# KITCHEN EQUIPMENTS AND MACHINERIES



**Chocolate Fountain**  
(Size: 5 Layer - 70 CM)



**Chocolate Fountain**  
(4 Layer - Red)



**Chocolate Fountain**  
(Size: 5 Layer - Red)



**SS Tea & Coffee Urn**  
(Capacity: 12 Litres [Deluxe] | 13 Litres))



**Milk & Water Boiler**  
(Capacity: 10 Litres | 20 Litres)



**Single Juice Dispenser**  
(Capacity: 3 Litres)

# KITCHEN EQUIPMENTS AND MACHINERIES



**Double Juice Dispenser**  
(Capacity: 3 Litres)



**Single Juice Dispenser**  
(Capacity: 8 Litres)



**Double Juice Dispenser**  
(Capacity: 8 Litres)



**Single Cereal Dispenser**  
(Capacity: 4 Litres)



**Double Cereal Dispenser**  
(Capacity: 4 Litres)



**Single Cereal Dispenser**  
(Capacity: 8 Litres)

# KITCHEN EQUIPMENTS AND MACHINERIES



**Double Cereal Dispenser**  
(Capacity: 8 Litres)



**Single Cereal Dispenser**  
(Capacity: 3.5 Litres - White)



**Double Cereal Dispenser**  
(Capacity: 3.5 Litres - White)



**Single Cereal Dispenser**  
(Capacity: 3.5 Litres - Black)



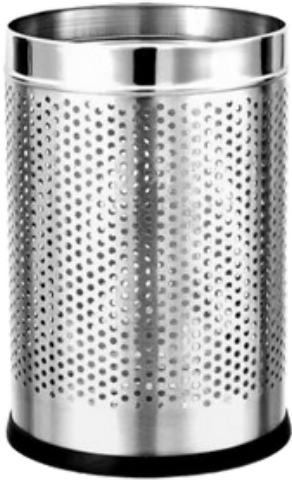
**Double Cereal Dispenser**  
(Capacity: 3.5 Litres - Black)



**SS Garage Tub**



## KITCHEN EQUIPMENTS AND MACHINERIES



**SS Perforated Dustbin**



**SS Swing Dstbin**

---

# And Much More...